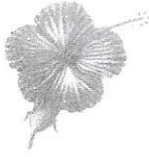
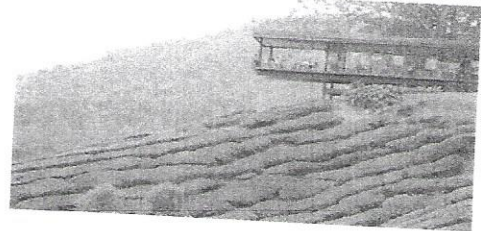


Travel Malaysia



2 Days 1 Night Cameron Highlands Cophthorne Hotel (4*)



4 to go from: \$158 per pax

3 to go from: \$168 per pax

2 to go from: \$198 per pax



Package Inclusive Of:

- * Two way coach transfer
- * Two way land transfer in Ipoh by taxi or van to Cameron (Hotel)
- * 01 night accommodation with buffet breakfast
- * S'pore to Ipoh depart at 9am or 9.45pm by 25 seater coach
- * Ipoh to S'pore depart at 10.30am or 9.30pm

Remarks:

- * Room / Coach seats are subject to availability
- * Maximum capacity for per room : 2 adults,1 cwb ,1 cnb or 3 adults & 1cnb.
- * Night market (Pasar Malam) located at Brinchang Town,
Starts at 6.00pm on Friday & Saturday only.
- * Hotel Breakfast Time: 6.30am to 10.00am.
- * Surcharge for Weekend / Peak / Public Holiday

Optional Countryside Tour (4hrs) (pick up 8.45am or 1.45pm)

(Countryside Tour inclusive of (Boh Tea Estate & Factory - closed on Monday) Buddhist Temple,
Rose Garden, Butterfly Farm, Strawberry Farm, Honey Bee Farm - Exclude Entrance Fee)

Our company reserves all rights to amend or change the price and itinerary without period notice

SRI MAJU TOURS & TRAVEL PTE LTD

5001 Beach Road Golden Mile Complex # 01-17 Singapore 199588 / Tel:6294 8228 / Fax: 62995661
Website:www.srimaju.com/Email address: srimajutours@srimaju.com / TA 1238 / Co Reg No:200205248N

2天1夜金马伦配套 Copthorne Hotel (4*)

四人出发从：每人\$158

三人出发从：每人\$168

二人出发从：每人\$198

配套包括：

* 新加坡 - 怡保，出发时间为早上9点或晚上9点45分（25座位巴士）

* 怡保 - 金马伦（酒店） - 怡保（德士或专车接送）

* 01晚酒店住宿+早餐

* 怡保 - 新加坡，回程时间为早上10点30分或晚上9点30分（25座位巴士）

房间和车位需得酒店或巴士有无空缺而定

** 周末 / 旺季 / 公共假期 需付附加费

* 金马伦自费旅游团 - 金马伦市区游（4小时）至少2人同行

（出发时间为早上8点45分 或 下午1点45分）

市区游包括：（BOH TEA 茶园 - 星期一休业）佛庙，玫瑰园，蝴蝶园，
草莓园，养蜂场 - (不包括入门票)

以上资料如有任何更改将不另行通知，中文版翻译于英文版，如有异议，将以英文版为准